

SAPIENS-X5MS: Epichlorohydrin GC analysis in drinking water with SAPIENS-X5MS column

Column: SAPIENS-X5MS P/N TR-453484

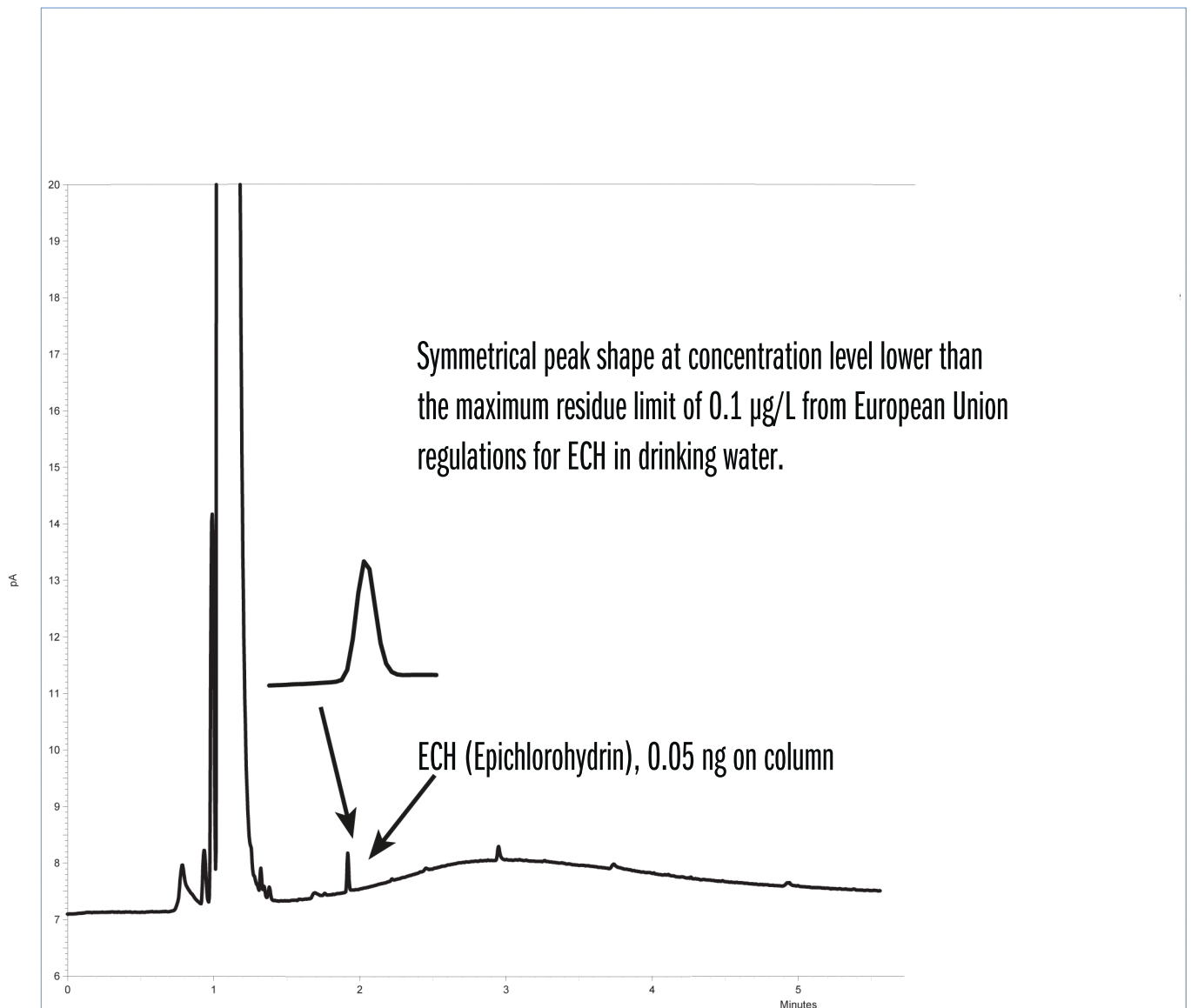
Dimensions: 20 m x 0,18 mm x 0,36 μ m

Injection: 0,1 μ L (2,5 mg/L epichlorohydrin in methylene chloride), pulse split, 40 psi at 250°C, split 1:5

Carrier gas: He, ct. flow 2,0 mL/min

Oven temperature: 40°C (0,5 min) to 100°C (5 min) @ 30°C/min

Detector: FID, 260°C



SAPIENS-X5MS: Epichlorohydrin

www.teknokroma.com