

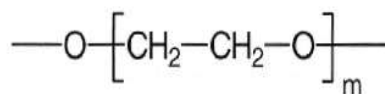


SAPIENS-WAX.HT

SAPIENS-WAX.HT

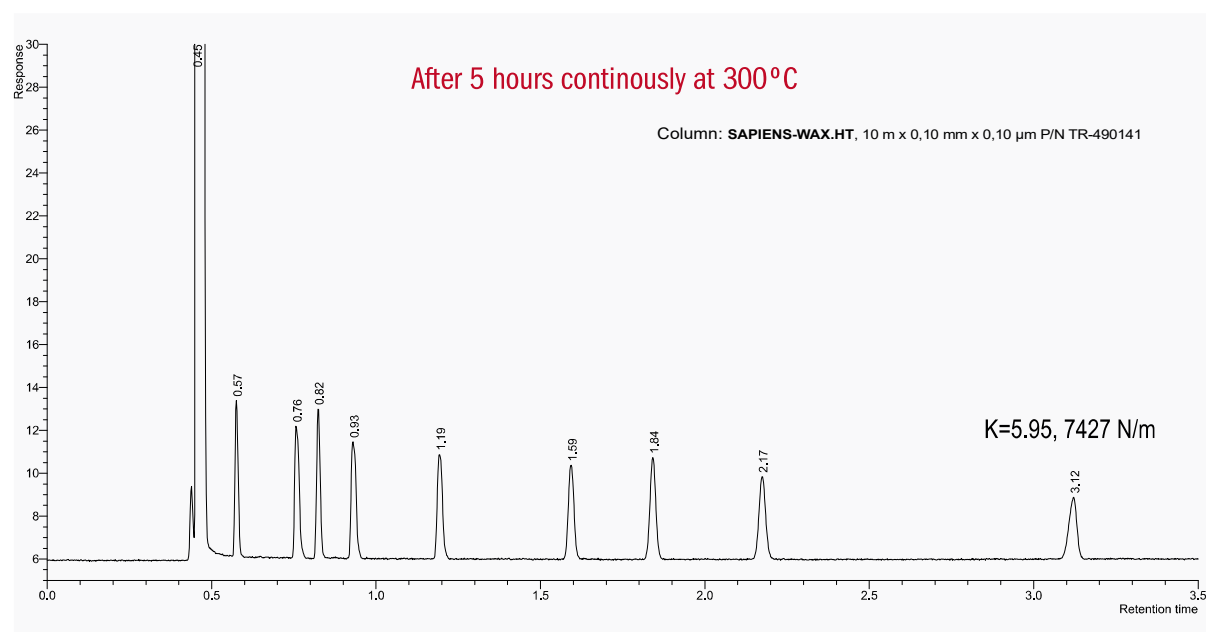
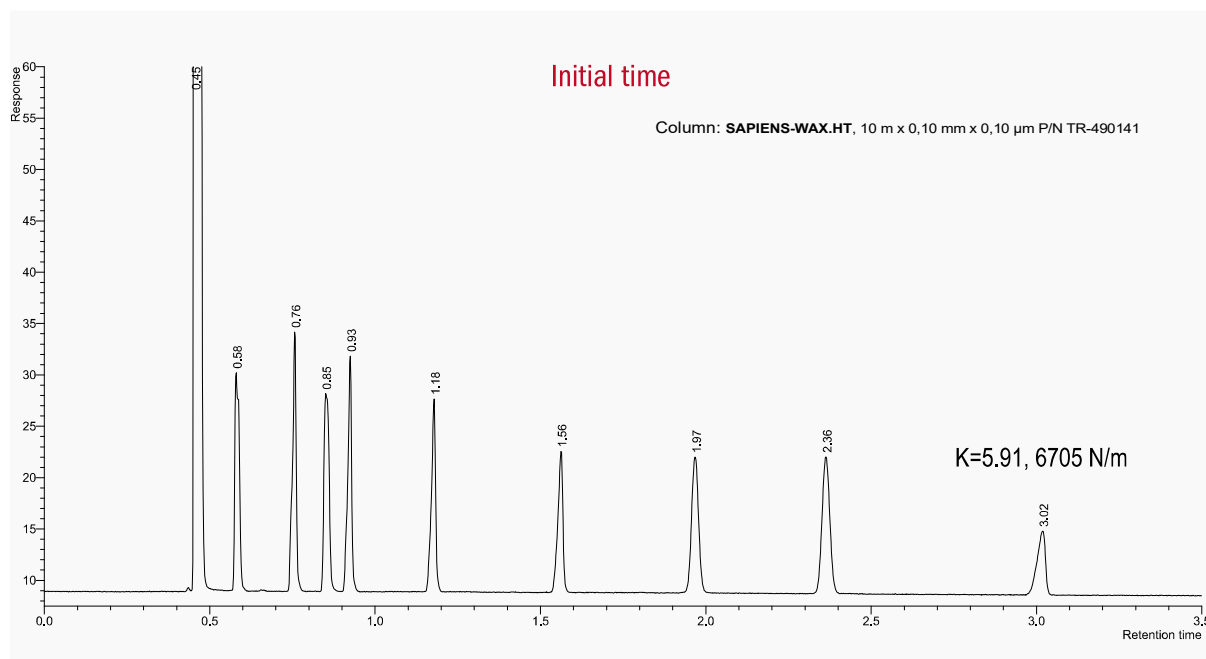
Polyethylene glycol that can withstand up to 300 °C

- Specifically designed for Fast GC and GC x GC analysis
- MSP High Performance



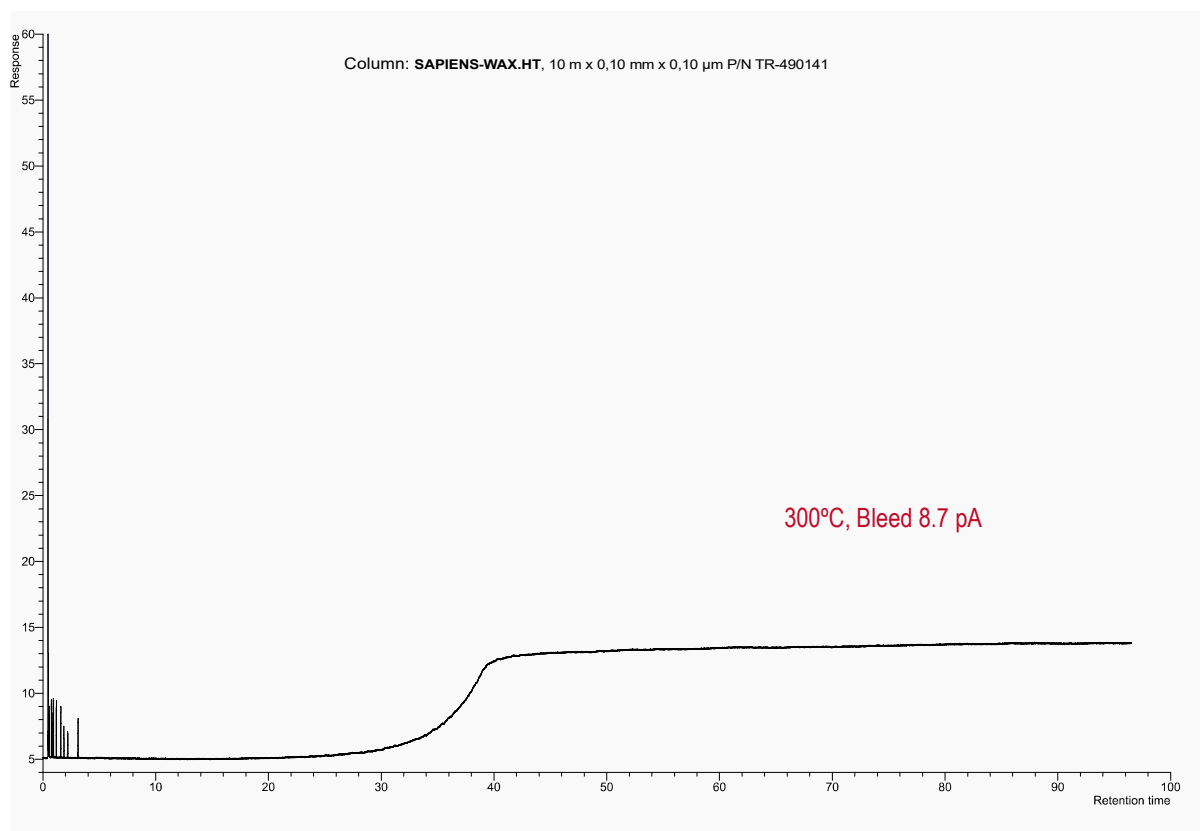
Structure of Polyethylene glycol

SAPIENS-WAX.HT: After 5hrs continuously at 300°C no degradation of the stationary phase is detected





SAPIENS-WAX.HT: Bleeding at 300°C



SAPIENS-WAX.HT

Internal Diam.(mm)	Length (m)	Film Thickness (µm)	Temp limits (°C)	Part. N°. (P/N)
0,10	2	0,10	35 to 300	TR-4901D1
	5	0,10	35 to 300	TR-4901A1
	10	0,10	35 to 300	TR-490141